

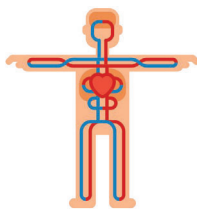
Year 6 Curriculum leaflet Summer 1



Sharing the World



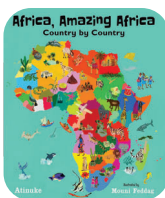
Evolution & Inheritance The Circulatory System



Geography

Our new topic is 'Sharing the World' which will;

- deepen our understanding of how trade connects the world
- examine how different man made and natural resources are traded
- explore more sustainable ways to trade goods



Reading & Writing

In English we will be:

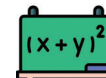
- practising reading techniques such as making and explaining inferences using evidence from the text to support us with our SATs tests.
- reading *The Arrival* by Shaun Tan and examining the themes of travel and isolation, drawing comparisons to our own experiences
- writing diary entries in role



Maths

In Maths we will be:

- revising key learning to support us ahead of our SATs including solving multi-step problems involving money and measures; finding percentages of amounts; calculating with fractions and reasoning about number
- studying topics that will help us prepare for secondary school including ratio, proportion and algebra



Science

We will continue to develop our knowledge of evolution and inheritance by comparing Darwin's and Wallace's theories. We will identify Mary Anning's contribution to science.

We will then begin a unit on the Circulatory System. We will learn:

- the main parts of the human circulatory system
- the functions of blood vessels, the heart and blood
- about the way in which nutrients and water are transported around human and animal bodies



PE

In PE we will be refining our athletics skills to prepare for Sports Day. We will also be developing our teamwork as we explore the rules and tactics for handball.

PE is taught on **Monday** and **Friday**. Children should wear their PE kit including plain black or white trainers to school on those days.

RE & PSHE

In **RE** lessons, we will be continuing to learn about commitment. This topic will examine different religious and non-religious teaching about the role of commitment in society.

In **PSHE**, we will explore the various relationships in our life and how we can prepare for the upcoming transition to our new school.

Art and Design

We will be focusing on creating an immersive art experience. We will learn:

- that artists create immersive art using colour, light, form and sound
- that installation art is an experience that takes up a space that the spectator has to enter
- to use visual notes in our sketchbooks to gather research and explore ideas