



Vocabulary

Knowledge I already have

In Year 3:

- I learnt the cardinal and intercardinal points on a compass.

In Year 4:

- I learned to identify the Tropics and Polar regions on a variety of maps using the latitude and longitude grid.
- I also studied land use and economic activity in places with different climates

In Year 5

- I became familiar with 4 and 6 figure grid references and can explain why they are useful.
- In Year 5, I also used Ordnance Survey maps and know a variety of commonly used map symbols.

Future Knowledge

Later in Year 6:

- I will be exploring the connections between position in the Earth, climate and human and physical characteristics of places identified for my world tour this half-term.
- I will be using my map reading skills to locate countries and describe features studied.
- I will also explore the connection between time zones and climate, biomes, vegetation and land use.

New Knowledge

This half term:

- I will be learning about the origins of the system of latitude and longitude and the reason why the prime meridian is in Greenwich.
- I will be learning about the different time zones that exist around the world.
- I will use Ordnance Survey maps to navigate around the UK using 4 and 6 figure grid references and the full range of OS symbols.
- I will explore the similarities and differences between the geographical features of the UK and Ghana.

Fieldwork

This half term:

- I will design a route map of my local area that includes the location of places that are significant to me.
- I will identify elements of the geography of my local area that are changing.
- I will survey members of the public about their feelings about the planned changes in their local area.
- I will visit Greenwich to learn about the significance of the Prime Meridian and Greenwich's role in this.

The Prime Meridian



The Prime Meridian runs through Greenwich and is at 0 degrees longitude as this was the location in which the system began.

Time zones



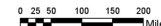
A time zone is a region of the Earth that has adopted the same standard time, usually referred to as the local time.

Greenwich Mean Time



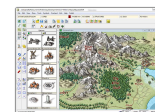
Greenwich Mean Time is the yearly average (or 'mean') of the time each day when the Sun crosses the Prime Meridian at the Royal Observatory Greenwich. All other time zones are calculated against this.

Scale



The scale of a map refers to the relationship between the size of the object and the size of its image on the map.

Cartography



The art and science of drawing maps and charts that accurately represent a geographical area.