

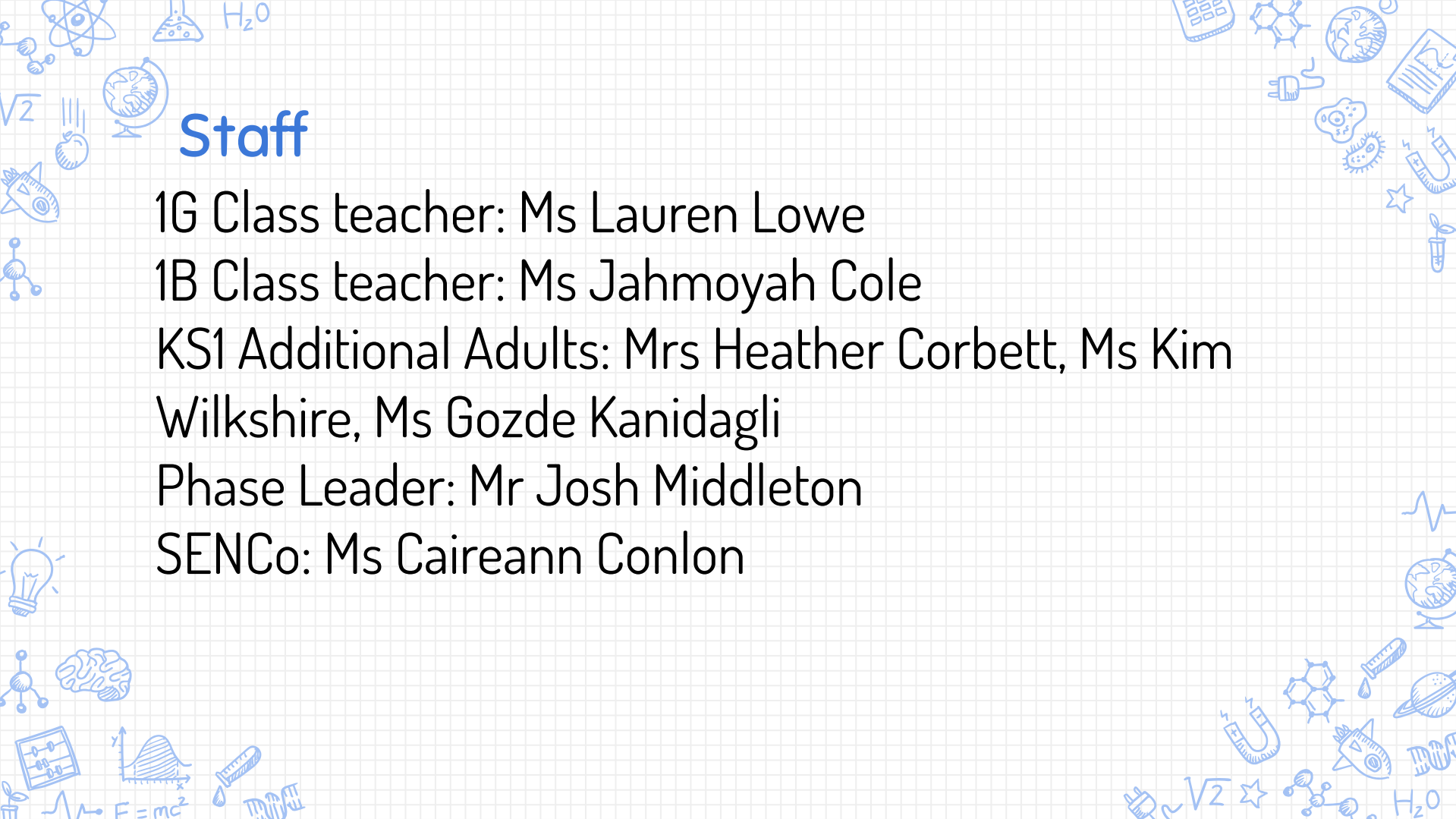


MEET THE TEACHER

Year 1

Friday 15th September



A decorative border surrounds the central text area, featuring various hand-drawn science-related icons in blue. These include atoms, lightbulbs, chemical structures, mathematical symbols like $\sqrt{2}$, H_2O , and $E=mc^2$, as well as biological sketches like a brain and a DNA helix.

Staff

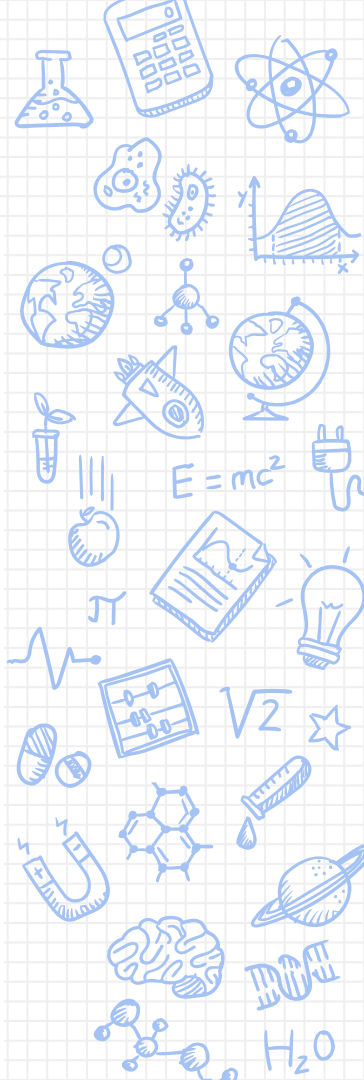
1G Class teacher: Ms Lauren Lowe
1B Class teacher: Ms Jahmoyah Cole
KS1 Additional Adults: Mrs Heather Corbett, Ms Kim Wilkshire, Ms Gozde Kanidagli
Phase Leader: Mr Josh Middleton
SENCo: Ms Caireann Conlon

1B Class teacher: Ms Jahmoyah Cole

Phase Leader: Mr Josh Middleton

SENCo: Ms Caireann Conlon

Timetables



1G - Lauren Lowe

Day	9.00	10.00	10.20	10.40	11.40	12.00	1.00	1.10	1.20	1.30	2.15	2.30	3.15
Monday	Music (9.30)	A s s e m b l y	B r e a k (PT)	RWI	TTS	L u n c h (PT)	MN	PM	HW	Art	B r e a k (PT)	Science	S t o r y t i m e
Tuesday	Maths			RWI	TTS		MN	PM	HW	PE (PPA)		Spanish (PPA)	
Wednesday	Maths			RWI	TTS		MN	PM	HW	Computing		Geography	
Thursday	Writing			RWI	TTS		MN	PM	HW	PE (Teacher)		Maths	
Friday	Maths			Writing	Spelling Test		MN	PM	Book Swap	Geography		RE/PSHE	

*PM = Phonics Meeting *MN = Mastering Number *TTS = Talk Through Stories *PT = Pinny Time

1B - Jahmoyah Cole

Day	9.00	10.00	10.20	10.40	11.40	12.00	1.00	1.20	1.20	1.30	2.15	2.30	3.15
Monday	Music	A s s e m b l y	B r e a k (PT)	RWI	TTS	L u n c h (PT)	MN	PM	HW	Science	B r e a k (PT)	Art	S t o r y t i m e
Tuesday	Maths			RWI	TTS		Spanish (PPA)		PM	HW		PE (PPA)	
Wednesday	Maths			RWI	TTS		MN	PM	HW	Computing		Geography	
Thursday	Writing			RWI	TTS		MN	PM	HW	Maths		PE (Teacher)	
Friday	Maths			Writing	Spelling Test		MN	PM	Book Swap	Geography		RE/PSHE	

*PM = Phonics Meeting *MN = Mastering Number *TTS = Talk Through Stories *PT = Pinny Time

Yearly Curriculum Overviews

new wave
federation

Art & Design and Design Technology Map

	Autumn 1	Autumn 2	Spring 1	Spring 2	Summer 1	Summer 2
YN	DT: Transport	Art: Autumn	Art: Lunar New Year	DT: Contrasting Countries	Art: Mixing Colours	Art: Summer DT: Starting Big School
YR	Art: Colour	DT: Toys	DT: Jamaica	Art: Spring	DT: My Local Community	Art: Minibeasts DT: Let's Create
Y1	Art: Drawing Spirals	DT: Preparing Fruit & Vegetables	Art: Simple Printmaking	DT: Sliders & Levers	DT: Templates & Joining	Art: Making Birds
Y2	DT: Wheels & Axles	Art: Explore & Draw	DT: Free standing structures	Art: Expressive Painting	DT: Templates & Joining - Sewing	Art: Be an Architect
Y3	DT: Shell Structures	Art: Gestural drawing with charcoal	Art: Working with Shape & Colour	DT: Levers & Linkages	Art: Making animated drawing	DT: Healthy & varied diet
Y4	Art: Storytelling through drawing	DT: 2D Shape to 3D product	DT: Circuits & switches	Art: Exploring Pattern	Art: Festival Feasts	DT: Pneumatics
Y5	Art: Topography & Maps	DT: Frame Structures	DT: Cams	Art: Fashion Design	DT: Celebrating seasonality	Art: Architecture- Dream Big or Small
Y6	DT: Pulleys	Art: 2D Drawing to 3D Making	Art: Print & sculpture	DT: Complex switches	Art: Brave Colour	DT: Combining Fabric Shapes

new wave
federation

History & Geography Map

	Autumn 1	Autumn 2	Spring 1	Spring 2	Summer 1	Summer 2
YN	Geography: Transport	History: Christmas	Lunar New Year	Contrasting Countries	History: Holi	Seasons: Summer History: Starting Big School
YR	History: All About Me	Geography: My School	Geography: Jamaica	Geography: Burkina Faso	Geography: My Local Community	History: Super Super Me
Y1	Geography: Map It!	History: Living Past	Geography: England	History: The Great Fire of London	Geography: The United Kingdom	History: Monarchy
Y2	Geography: Map It!	History: Hackney's History	Geography: Hackney & Alexandria	History: Marvellous Medics	Geography: Weather	History: The Victorians
Y3	Geography: Map It!	History: Stone Age to Iron Age	Geography: Settlements	History: Ancient Egypt	Geography: Rivers	History: Ancient Civilizations
Y4	Geography: Map It!	History: The Romans	Geography: Tectonic Plates	History: Anglo Saxons	Geography: North & South America	History: Leisure & Entertainment
Y5	Geography: Map It!	History: The Vikings	Geography: Our Natural Planet	History: The Greeks	Geography: Trade	History: Islamic Civilizations
Y6	Geography: Map It!	History: Beeth	Geography: What's It Like There?	History: Building the Past	Geography: Sharing the World	History: British Empire

new wave
federation

Computing Map

	Autumn 1	Autumn 2	Spring 1	Spring 2	Summer 1	Summer 2
YN	Transport	Christmas	Winter	Life Cycles	Mixing Colours	Farm Animals
YR	Colour	Toys	Jamaica	Spring	Minibeasts	Let's Create
Y1	Technology Around Us	Digital Painting	Moving a Robot	Grouping Data	Digital Writing	Programming Animations
Y2	IT Around Us	Digital Photography	Robot Algorithms	Pictograms	Digital Music	Programming Quizzes
Y3	Connecting Computers	Stop Frame Animation	Sequencing Sounds	Branching Databases	Desktop Publishing	Events & Actions in Programmes
Y4	The Internet	Audio Production	Repetition in Shapes	Data Logging	Photo Editing	Repetition in games
Y5	Systems & Searching	Video Production	Selection in Physical Computing	Flat file Database	Vector Drawing	Selection in quizzes
Y6	Communication & collaboration	Web Page Creation	Variables in Games	Introduction to Spreadsheets	3D Modelling	Sensing Movement

new wave
federation

Science Map

	Autumn 1	Autumn 2	Spring 1	Spring 2	Summer 1	Summer 2
YN	Transport	Autumn	Winter	Life Cycles	Growing Things	Summer
YR	All About Me	Toys	Homes	Spring	Minibeasts	Super Duper You
Y1	Everyday Materials	Animals & The Human Body		Plants	Seasonal Changes	
Y2	Living Things & Their Habitats	Uses of Everyday Materials		Growing Plants	Animals Including Humans	
Y3	Light	Forces & Magnets	Rocks	Plants & their Life Cycles	Healthy Bodies	
Y4	States of Matter	Sound	Electricity	Identification & Classification	Digestion & Food Chains	
Y5	Properties and Changes of Materials	Forces	Earth and Space	Plant and Animal Life Cycles	The Human Life Cycle	
Y6	Classification	Electricity	Light	Evolution & Inheritance	The Circulatory System	

Half-Termly Curriculum Information

English

In English we will:

- continue to learn new sounds and build reading fluency in RWI
- read Beegu and The Lion Inside
- use capital letters consistently and correctly
- leave spaces between our words



Maths

We will be learning to:

- make numbers within 20, including learning our number bonds to 10
- doubling and halving
- use part whole models and ten frames to represent addition and subtraction within 20
- Identify 2D and 3D shapes and investigating repeating patterns



Science

We will be learning to:

- distinguish between an object and the material from which it is made
- describe the simple physical properties of a variety of everyday materials
- compare and group a variety of everyday materials on the basis of their simple physical properties

Geography

We will be learning to:

- name, locate and identify characteristics of the 4 countries and capitals of the UK
- name, locate and identify the seas surrounding the UK
- use a map and globe to identify the UK and its countries



Curriculum Information

new wave
federation

Year 1 - Autumn 1

Computing

We will be learning how to:

- use different tools to create artwork on an iPad
- use devices and internet safely and responsibly



PE

We have a PE lesson every **Tuesday and Thursday**.

Please ensure your child wears their PE kit on those days.

The focus of the sessions will be 'send and return'



PSHE

Our PSHE focus is Being Me and we will be learning about:

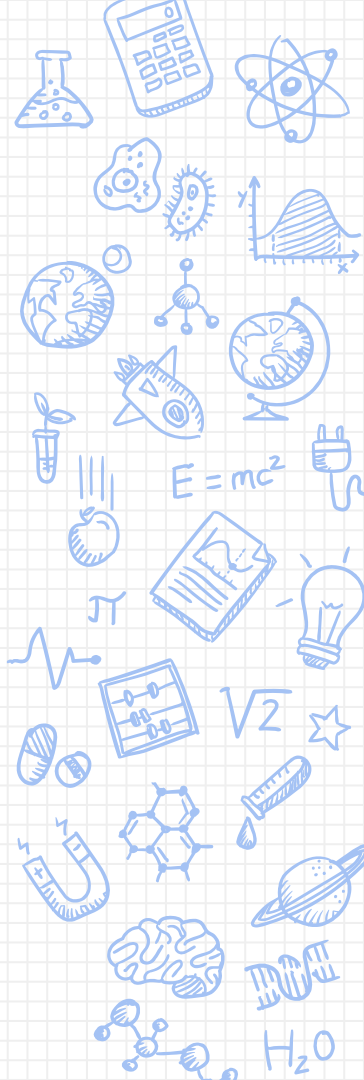
- the qualities that make ourselves special
- keeping ourselves safe at home and in the community
- playing an active, positive role in the school community



Art and Design

We will be exploring spirals, looking closely at:

- spirals in the natural world
- drawing spirals using a variety of different mediums, including charcoal and paint
- the artist Molly Haslund, who uses her body as a drawing tool



English

New Wave - Year 1 - Reading Pathway

Books to Read for Pleasure

The Classic



The Future Classic



The Non-Fiction One



The Poetry Collection



The Graphic Novel



The Funny One



Books to Write From

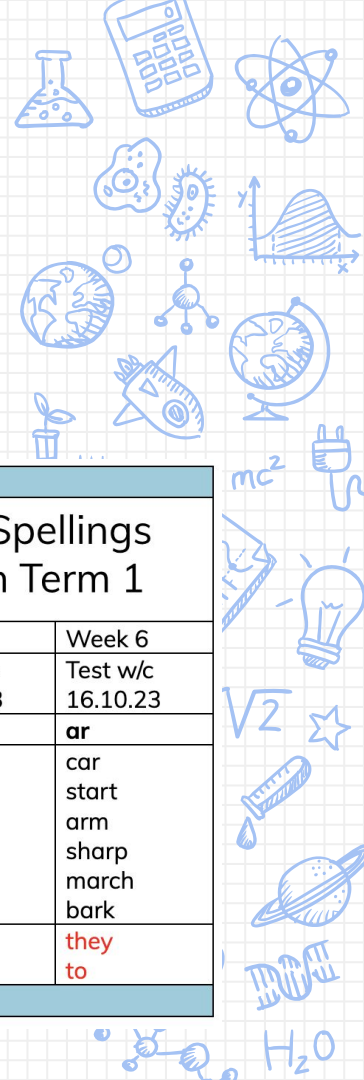


This year, Year 1 will be writing: a range of stories, personal recounts, fact files, labelled images to explain, an invitation to persuade, instructions – a recipe and directions, and letters.

new wave
federation

Year 1 Spellings Autumn Term 1

Week 1	Week 2	Week 3	Week 4	Week 5	Week 6
Test w/c 11.09.23	Test w/c 18.09.23	Test w/c 25.09.23	Test w/c 02.10.23	Test w/c 09.10.23	Test w/c 16.10.23
ay	ee	igh	ow	oo	ar
may day spray play way stay	see tree green three week sleep	high light right night might sight	snow blow crow shown arrow yellow	food pool moon zoo soon spoon	car start arm sharp march bark
I the	you your	said was	are of	want what	they to



Maths

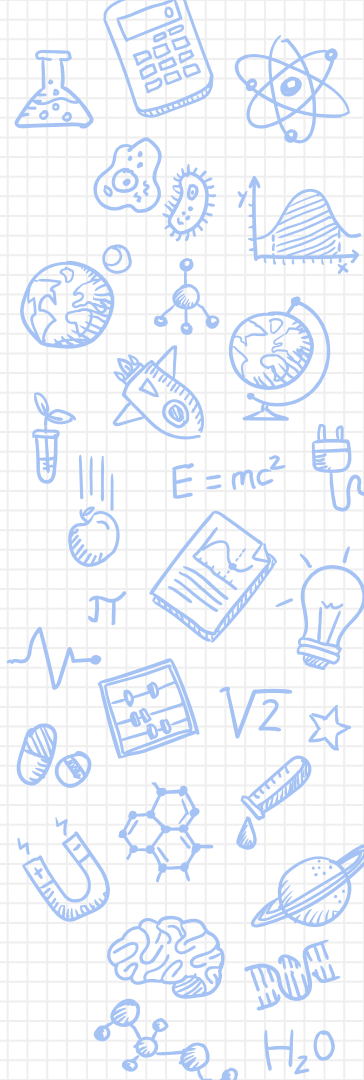


Mathematics Curriculum Map: Year 1

	Week 1	Week 2	Week 3	Week 4	Week 5	Week 6	Week 7	Week 8	Week 9	Week 10
Autumn	Numbers to 10		Addition and subtraction within 10		Shape and patterns		Numbers to 20		Addition and subtraction within 20	
	<ul style="list-style-type: none"> Represent, compare and explore numbers within 10 One more and one less Doubling and halving 		<ul style="list-style-type: none"> Represent and explain addition and subtraction Commutativity Addition and subtraction facts 		<ul style="list-style-type: none"> Identify, describe, sort and classify 2-D and 3-D shapes Investigate repeating patterns Use and follow instructional and positional language 		<ul style="list-style-type: none"> Identify, represent, compare and order numbers to 20 Doubling and halving One more and one less 		<ul style="list-style-type: none"> Represent and explain addition and subtraction strategies including 'Make Ten' Use known facts to add and subtract 	
Spring	Week 1	Week 2	Week 3	Week 4	Week 5	Week 6	Week 7	Week 8	Week 9	Week 10
	Time		Exploring calculation strategies within 20		Numbers to 50		Addition and subtraction within 20		Fractions	
	<ul style="list-style-type: none"> Read, write and tell the time to o'clock and half past on analogue clock Sequencing daily activities Whole and half turns linked to time 		<ul style="list-style-type: none"> Model, explain and choose addition and subtraction strategies 		<ul style="list-style-type: none"> 2-digit numbers – represent, sequence, explore, compare. Count in 2s, 5s and 10s Describe and complete number patterns 		<ul style="list-style-type: none"> Illustrate, explain and link addition and subtraction with equations Apply 'Make Ten' strategy Use language to quantify and compare difference 		<ul style="list-style-type: none"> Identify $\frac{1}{2}$ and $\frac{1}{4}$ of a shape or object Find $\frac{1}{2}$ and $\frac{1}{4}$ of a quantity 	
Summer	Week 1	Week 2	Week 3	Week 4	Week 5	Week 6	Week 7	Week 8	Week 9	Week 10
	Numbers 50 to 100 and beyond		Addition and subtraction		Money		Multiplication and division		Measures: Capacity and volume	
	<ul style="list-style-type: none"> Read, write, represent, compare and order numbers to 100 One more / fewer, ten more / fewer Identify number patterns 		<ul style="list-style-type: none"> Explore addition and subtraction involving 2-digit numbers and ones Represent and explain addition and subtraction with regrouping Investigate number bonds within 20 		<ul style="list-style-type: none"> Name coins and notes and understand their value Represent the same value using different coins Find change 		<ul style="list-style-type: none"> Share equally into groups Doubling Link halving to fractions Add equal groups Explore arrays 		<ul style="list-style-type: none"> Compare capacities, volumes and lengths Explore litres Apply understanding of fractions to capacity 	



The Dimensions of Depth - Conceptual Understanding, Language and Communication and Mathematical Thinking - underpin all aspects of the curriculum; problem solving is at the heart and is embedded in all units.



Science

Knowledge Organiser Booklet
Year 1
Autumn 1

Name _____
Class _____

Everyday Materials - Year 1 - Unit 1

Scientific Enquiry



identifying & classifying

Identifying means knowing what something is and naming it. We will **identify** objects, materials and material properties.

Classifying means comparing what is the same and what is different in order to group them. We will compare properties of everyday materials and group things together if they have something in common. We will **classify** objects by material and materials by their properties.



Working Scientifically

Asking scientific questions

Planning an enquiry

Observing closely

Measuring (taking measurements)

Gathering and recording results

Presenting results

Interpreting results

material

A **material** is what something is made of. Some everyday **materials** are: **wood, paper, metal, plastic, glass, fabric, water, rock, rubber.**



object

An **object** is something that can be seen and touched. Some **objects** in the classroom are tables, chairs, pencils, water bottles, books.

This **object** is a chair. It is made from the material plastic.



property

A **property** is what a material is like. Some common properties are: **stretchy, stiff, bendy, rigid, see-through, not see-through, hard, soft.**



soft

hard



absorbent

A material is **absorbent** if it is able to soak up liquid easily.



waterproof

A material is **waterproof** if it keeps water out.



Things you learnt in previous topics

In Nursery and Reception, you learnt what is the same and different between objects in the world around you. You learnt the names of some of the materials that objects are made of such as wood and plastic.



How this connects with future learning

In Year 2, you will identify and compare the suitability of different everyday materials, such as wood, metal, plastic, glass, brick, rock, paper and cardboard for a particular purpose like a superhero's suit. You will also find out how the shapes of solid objects made from some materials can be changed by squashing, bending, twisting and stretching.

Geography

Knowledge Organiser Booklet
Year 1
Autumn 1

Name
Class

new wave
for education

Map It - Year 1 - Autumn 1

Tier 2 Vocabulary

locate

To find the exact place or position of something.

You can **locate** the playground on a map of the school.

Compass directions can help us to **locate** items.

I **located** the toy I had lost.

communicate

To share information and ideas.

I **communicated** what I had learnt in the lesson.

We can **communicate** our favourite place to visit in the local area.

We can **communicate** how we are feeling.

Key Vocabulary

house

A place where someone lives.

I live in a **house**.

There are five **houses** on my street. .



factory

A place of work that produces items to be sold.

There is a **factory** near my house which makes shoes.

My bag was made in a **factory**.



shop

A place where items are bought and sold.

A supermarket is a **shop** which sells food.

There are two toy **shops** near my house.



soil

The top layer of the Earth's surface where plants grow.

I planted some seeds in **soil** in my pot.

There are three trees growing in the **soil** in my garden.



vegetation

Plants in a particular place.

There is lots of **vegetation** in the park.

They cut down all the **vegetation** in the garden.



How this connects with previous learning

In Reception, you described your location.

In Reception, you explored the natural world around you.

In Reception, you explored the differences between places you visited.



How this connects with future learning

In Spring 1, you will learn about physical and human geography across England.

In Summer 1, you will learn about physical geography across the United Kingdom.

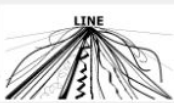







In Year 2, you will learn about the continents and oceans of the world.

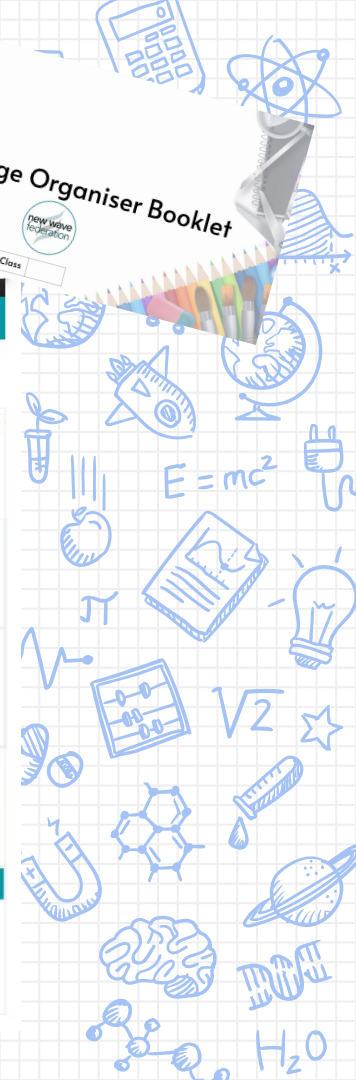
Art & Design/Design Technology

Knowledge Organiser Booklet
Year 1
Autumn 1

Name _____
Class _____

Drawing Spirals - Year 1 - Autumn 1

Art Themes		Tier 2	Key Vocabulary			
line	shape	observe	movement	mark-making	physical drawing	spiral
A long mark or stroke that could be straight, curved, thick, thin or any direction.	A form or outline of something.	Looking carefully and closely.	Changing from one position or posture to another.	Different marks used to make art e.g. dots, dashes, lines.	When we use our whole body to draw with.	Winding in a continuous and gradually curve.
We can make different lines using pencil, paint, charcoal and pastels.	We have drawn shapes such as squares and circles.	We can observe the world around us and carefully draw what is in front of us.	We can use different movements to create lines and shapes in our drawings.	We can use a range of mark making in our drawings.	Physical drawing allows us to use our whole arm or even our whole body to draw with.	Use hands, wrists, arms and even our whole bodies we can draw different spirals .
We will use a variety of lines to make spiral drawings.	We can make different spiral shapes .	We observe by looking very closely and focusing.	With movement we can make large drawings.	We use mark making when using different media including paint, pencil and charcoal.	We can make exciting, expressive drawings with physical drawing .	We see spirals in nature such as in snail shells .
						
How this connects with previous learning			How this connects with future learning			
In Reception, you made lines using pencils and paint.	You created drawings using shapes in Reception.	You have observed different things from nature including animals and plants.				
			In Year 3, you will design your own collages using different shapes and colours.	In Year 4, you will make 3D sculptural forms inspired by food.	In Year 5, you will design and construct architecture models.	



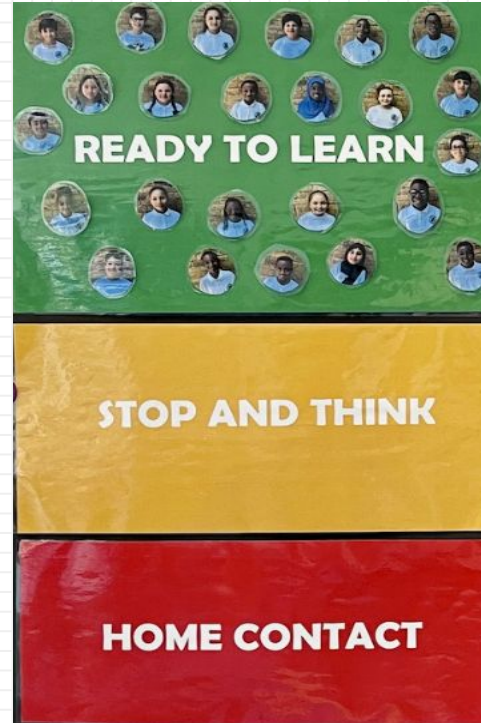


Excellence for All

Green-ready for learning.

Orange -Stop and think. Children are given the opportunity to reflect on their choices and get ready for learning again.

Red – Parent contact. Consequence if undesirable behaviour persists or if a child's actions are considered extreme.



School Uniform

- navy crewneck sweatshirt or cardigan with logo
- light blue polo shirt with logo
- black school trousers, knee-length skirt or shorts, pinafore or blue check dress
- plain black, white or grey socks or tights
- plain black shoes

**Simple ear studs and religious items are the only jewellery permitted.
Please leave all other jewellery at home.**

Pre-loved uniform is available through the PSA website or the school office.

PE Uniform

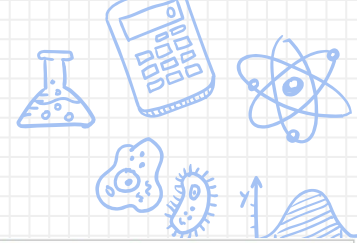
- light blue polo shirt with logo
- plain black PE shorts or tracksuit bottoms
- plain black, white or grey socks
- plain black (or white) plimsolls or plain trainers
- **on Tuesday and Thursday, children should come to school dressed in PE kit**



- the school day begins at 8:55am
- there are two bells in the morning – one at 8.53am where children get ready to learn in their lines and one at 8.55am where children go into their classrooms to complete their morning review tasks whilst the register is taken
- please be punctual to avoid late marks and unauthorised absences
- late = after registration has closed
- children should be collected from their classroom at 3.30pm, the KS1 playground from after school clubs and the reception from Our Space

- if your child is sick please ring (or email gboffice@newwavefederation.co.uk) on the first morning of absence by 9am
- holiday during term time will not be authorised
- you may receive a fine for unauthorised absences
- the government now requires schools to inform parents when attendance is below 95%
- attendance below 90% is classified as persistent and is reported to the local authority

- staff names, the timetable, curriculum leaflets, knowledge organisers, spelling lists and home learning are saved in the classes section of the website
- you can make appointments to see the class teacher or phase leader/SENCo after school (we can usually be flexible with timings to meet your needs)
- e-mails with messages for class teachers or school leaders should go through the school office



Home learning

- spelling practice (weekly tests begin this week)
- reading (15 mins daily). Your child will bring home their RWI book, a linked book bag book and a chosen 'reading for pleasure' book for you to read to them/to read together
- maths practice weekly including learning key facts
- geography, history or science tasks to be completed each half term
- the home learning google site can be accessed via the classes section of the school website

Year 1 Geography Homework Project

It's time to get creative, Year 1! We would like you to use the materials you have at home to make one of the following:

1. A compass



2. A map of your local area



3. A physical or human feature you have learnt about.

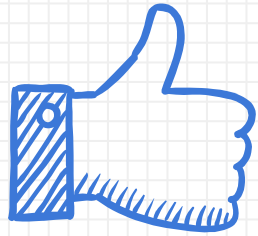


Please hand in your projects by **Friday 13th October**. We can't wait to see them!

Science	Computing	Art / DT
		



- please make sure the school has up to date contact details and three contact numbers for emergencies
- all monies are collected through ParentPay
- ensure the school has any medication your child needs and you have completed a medicine form (unprescribed medicine cannot be administered by staff)
- **ensure your child's clothes and property are named**
- **ensure your child brings in (and takes home) daily a named water bottle**



THANK YOU
ANY
QUESTIONS?